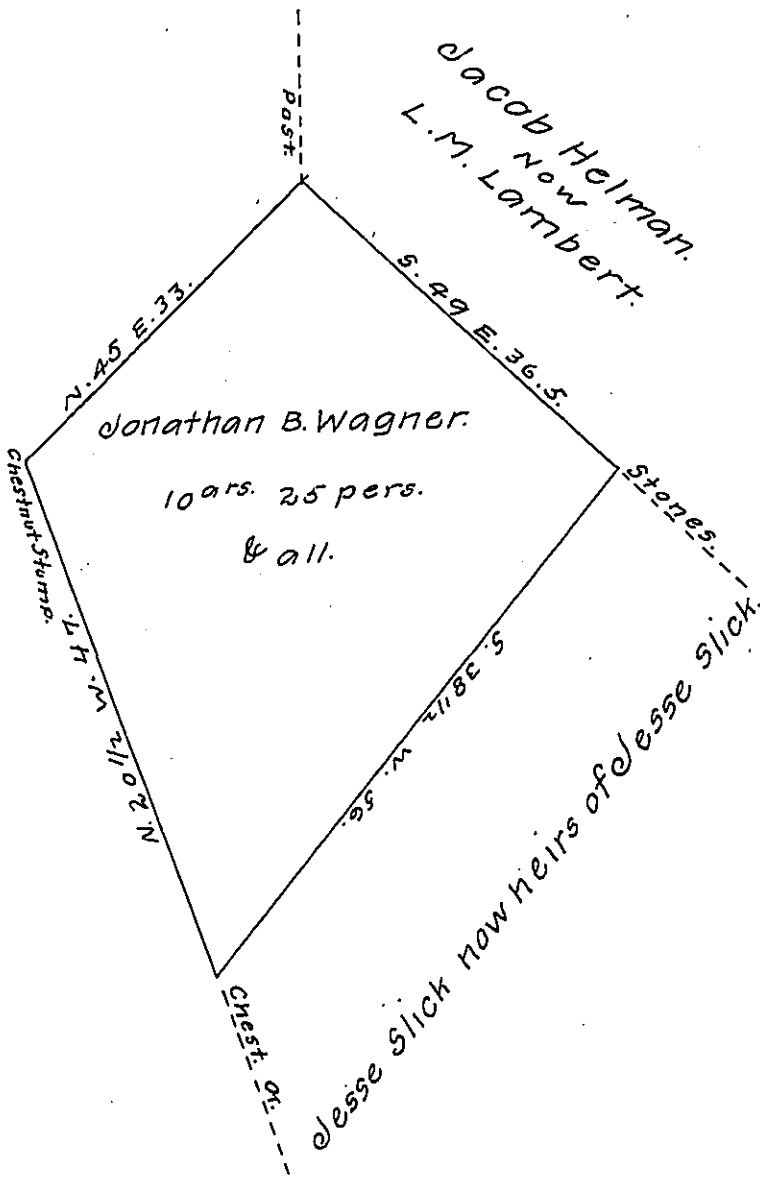


Jonathan B. Wagners heirs.



Note = The discrepancies Existing between the Warrant and survey of the above tract can only be Explained in this way - the application calls for lands of Jesse Slick on the north "That is" the land lies north of Jesse Slick - Jacob Helman on the west - the land being west of Jacob Helman - and so with the other adjoiner - These adjoiners are all there - but in a reverse order from that given in the warrant.

Wm. Baker, C.S.

A Draft of a tract of land situated in the Township of Shade and County of Somerset, containing 10 acres, 25 perches and allowance of six per cent. for roads, etc. Surveyed the 14th. day of January 1898, in pursuance of a warrant granted to Jonathan B. Wagner dated the 15th. day of December 1881.

Wm. Baker

To James W. Latta, Esq.,

secretary of Internal Affairs

County Surveyor.

IN TESTIMONY that the above is a copy of the original remaining on file in the Department of Internal Affairs of Pennsylvania, made conformably to an Act of Assembly approved the 16th day of February, 1833, I have hereunto set my Hand and caused the Seal of said Department to be affixed at Harrisburg, this twenty ninth day of July, 1907.

Henry Howell
Secretary of Internal Affairs.